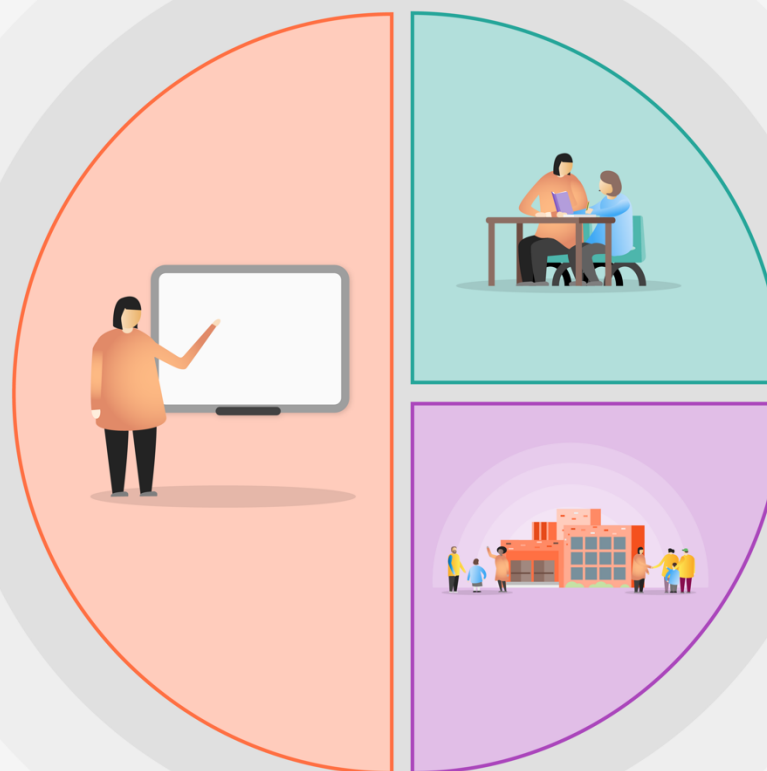


1 Teaching

- Whole school support implementing the ACE curriculum – academic excellence, meta-cognition and character development (tailored by gap analysis)
- Reduce work-load to support PIRA/PUMA/AR testing and gap analysis to ensure ‘responsive teaching’
- Reduce Teacher workload – assessment, feedback and marking working party leading to trust wide policy and linked professional development
- Additional time for teachers to have professional development to support curriculum adaptation, planning, assessment
- CPD focused on developing pedagogy AFL, formative assessment and metacognition. (Walkthru book) Particular focus on disadvantaged. Including trust wide masterclasses.
- Coaching and self-evaluation model implemented
- NQT/RQT paired with senior teachers ‘GAP analysis and implementation and given time
- Monitor and evaluate outcomes and quality of implementation to inform 21.22



2 Targeted academic support

- Pre-teaching
- Precision teaching
- EYFS – PSED/Vocabulary through additional staff member to support.
- Pupil progress meetings October
- RWI phonics – whole school
- Premier Education providing much needed active breaks for pupils and to allow for staff to continue high quality interventions with smaller groups

3 Wider strategies

- Provide all staff with online teaching technical support
- 1:1 behavioural support across the school – first responder
- Forest Education/School farm/Blue Sky Cafe
- Breakfast for all pupils everyday – Magic breakfast
- Safeguarding officer supporting vulnerable families
- Delivery of food packages to vulnerable families